



WHITE PEACH – PRODUCT SPECIFICATION

GENERAL INFORMATION:

PRODUCT NAME	PEACH WHITE
COUNTRY OF ORIGIN	CHILE
STORAGE TEMPERATURE	32F° – 34F°

SIZE & STYLE:

WHITE PEACHES	CONVENTIONAL		TREE RIPE	
STYLES	2 LAYER TRAYS	VOLUME FILL	2 LAYER TRAYS	VOLUME FILL
SIZES	32 – 56	60 - 78	32 – 56	60 - 78

#PLU:

WHITE PEACHES	CONVENTIONAL		TREE RIPE	
PLU SIZES	32 – 68	70 – 78	32 – 68	70 – 78
#PLU	#4401	#4400	#3314	#3313

PACKAGING:

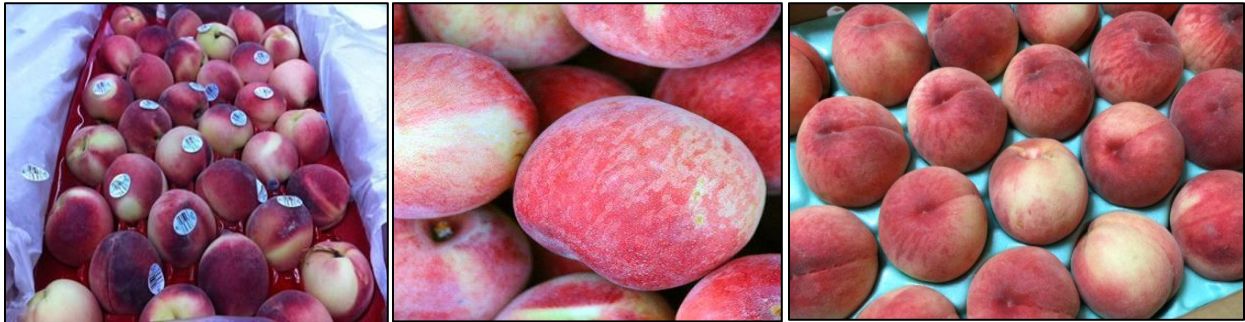
2 LAYER TRAYS	<u>TYPE 1</u>	<u>TYPE 2</u>	<u>TYPE 3</u>	<u>TYPE 4</u>
TIE / HI (bx)	8 x 12	8 x 13	8 x 14	8 x 15
BOX SIZES (cm)	30.5 x 50.8 x 15.8	30.5 x 50.8 x 14.8	30.5 x 50.8 x 15.8	30.5 x 50.8 x 14.8
BOXES / PALLET	96	104	112	120
NET WEIGHT	8 kg (17.6 lbs)	8 kg (17.6 lbs)	8 kg (17.6 lbs)	8 kg (17.6 lbs)
VOLUME FILL	<u>TYPE 1</u>	<u>TYPE 2</u>	<u>TYPE 3</u>	<u>TYPE 4</u>
TIE / HI (bx)	8 x 12	8 x 13	8 x 14	8 x 15
BOX SIZES (cm)	30.5 x 50.8 x 15.8	30.5 x 50.8 x 15.8	30.5 x 50.8 x 15.8	30.5 x 50.8 x 15.8
BOXES / PALLET	96	104	112	120
NET WEIGHT	9 kg (19.8 lbs)	9 kg (19.8 lbs)	9 kg (19.8 lbs)	9 kg (19.8 lbs)

AVAILABILITY:

PRODUCT	MONTHS											
WHITE PEACHES	JAN	FEB	MAR	APR	MAY	JUN	JUL	AUG	SEP	OCT	NOV	DEC



PICTURES:



NUTRITION FACTS:

Nutrition Facts			
Serving Size 1 Large Nectarine (156g / 5.5oz)			
Amount Per Serving			
Calories 69	Calories from Fat 4		
% Daily Value*			
Total Fat 0g	1%		
Saturated Fat 0g	0%		
Trans Fat 0g			
Cholesterol 0mg	0%		
Sodium 0mg	0%		
Total Carbohydrates 16g	5%		
Dietary Fiber 3g	11%		
Sugars 12g			
Protein 2g			
Vitamin A 10%	• Vitamin C 14%		
Calcium 1%	• Iron 2%		
*Percent Daily Values are based on a 2,000 calorie diet. Your Daily Values may be higher or lower depending on your calorie needs.			
	Calories	2,000	2,500
Total Fat	Less than	65g	80g
Sat Fat	Less than	20g	25g
Cholesterol	Less than	300mg	300mg
Sodium	Less than	2,400mg	2,400mg
Total Carbohydrate		300mg	375mg
Dietary Fiber		25g	30g